

Have you got your fingers crossed that lockdown will be over on 1st February and schools will be back to normal? Or have you been enjoying this change of routine? Here at the Wildlife Park, we are looking forward to welcoming our visitors back through the gates, and especially our school trips. Hope we'll be seeing your class before too long, for some "wild" learning!

Cheeky Monkeys!



Zlotan



Zevi

A very handsome squirrel monkey called Zlotan lives at the Wildlife Park. He knows he is gorgeous, and he has several girlfriends who adore him! He rather liked being the only male squirrel monkey, but he now he's the proud father of young Zevi, who is growing to look very much like his dad! Zevi is very mischievous - when the keeper goes to feed the monkeys he rushes over to the food bucket and picks out the best bits for himself! Zevi's favourite fruit is grapes, but he really enjoys a juicy worm or two for his afternoon snack. Do you think he is as handsome as Zlotan?

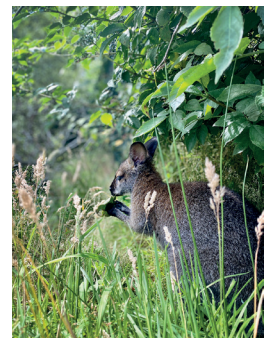
Just look at her now!



Winnie last spring

Last spring Winnie was still in the pouch when her mum was killed on the road. Keeper Carly came to the rescue and used her animal

expertise to hand rear baby Winnie - and just look at Winnie now! Living in our Australian paddock, as an independent adult, strong and healthy. Carly couldn't be more proud!



look at her now!

Whose dinner?

The animal that's going to eat this meal has a confusing name. Although it sounds canine - it's actually a type of rodent, more closely related to mice or guinea pigs.



Which animal?
Unscramble the letters to find out!

p a r i t e r n
t e g l e n m u l e r
z a i r b i l a n r a t i p



Animal of the Week

Emu

The emu is the second largest bird in the world! It can't fly - instead it has evolved to live on the ground, where it can cover long distances on its long legs. Its feathers are unusual - they have a double shaft, and the "barbs" don't knit together - so they are shaggy for warmth rather than sleek for flying or swimming.

Habitat

Mainly grasslands and semi-desert, but sometimes dry forests too

Food in the Wild

They mostly graze on grass and other plants. Sometimes they eat small animals such as insects

Superpower

If cornered they can kill with a powerful kick of their long legs

broad beak for grazing on grass

eyes have clear film to protect from dust

thick coat of shaggy feathers for warmth

long, strong legs can run at around 30 miles per hour!

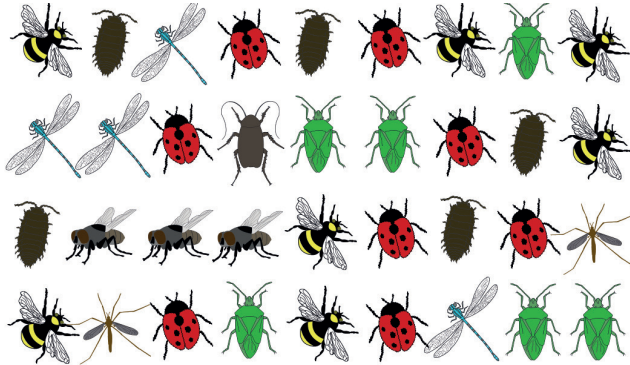
sharp claws and long middle toe for giving its enemies a powerful kick in the belly

short wings can't fly, but help balance

what looks like a knee bent the wrong way is actually the ankle

Bug Bar Chart

Colour in a square in the right column for each bug that you find in the picture. You could use one colour, or a different colour for each column.



- shield bug
- crane fly
- ladybird
- bee
- housefly
- cockroach
- woodlouse
- dragonfly
- draw a line to label each one

ODD ONE OUT - 7 of the above are insects, but one is a crustacean. Which one?

Cut out and keep me



answers

Which animal: terrapin, gentle lemur, brazilian tapir. Whose dinner? The prairie dogs. The woodlouse is the crustacean (related to crabs!)